

**Dairy Farmers of New Brunswick
Milk Matters: Production and Payment Summary Report for April 2022**

Quota Exchange for May, 2022

	Price in Dollars	# of Sellers	Kgs Offered By Sellers	Total Cum. kgs	Difference Between Sellers/Buyers	Total Cum. kgs	Kgs Wanted By Buyers	# of Buyers
QESP	\$24,000.00		3.0	3.0	677.0	680.0	680.0	
TOTALS		2	3.0				680.0	34

QESP = Quota Exchange Selling Price

QESP = Le prix de vente de quota

3.0 of 680.0 kgs wanted at or above the Quota Exchange Selling Price of \$24,000.00 were purchased.

3.0 des 680.0 kilos demandé au prix de vente de \$24,000.00 ou au dessus ont été acheté. Il y avait un total de 3.0 kgs proposés à la vente et le total des offres pour l'achat de 680.0kg.

There was a total of 3.0 kgs offered for sale and total bids to purchase of 680.0 kgs.

Next Exchange closes at 4:00 p.m., Wednesday June 1, 2022

Results are available Monday June 6, 2022

Month	May	Apr	Mar	Feb	Jan	Dec	6 month avg.
Clearing Price	\$24,000	\$0	\$0	\$0	\$24,000	\$24,000	\$24,000
Kgs on Exchange	3.0	.0	.0	.0	2.0	25.5	10.2
Kgs by Transfer	.0	79.7	.0	.0	188.8	.0	44.8

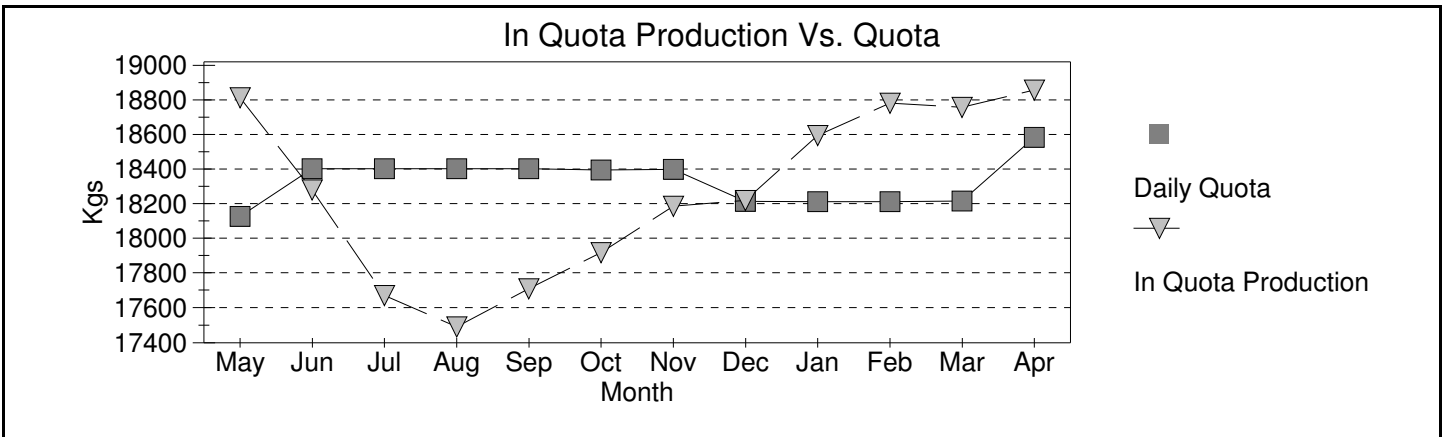
NB Domestic Milk Pool

Over Quota	BF Kg	BF \$/kg	BF \$	PT Kg	PT \$/kg	PT \$	OS Kg	OS \$/kg	OS \$
April 2022	205	-\$2.7327	(\$559)	147	-\$1.9107	(\$280)	250	-\$.3917	(\$98)
12 Months	4,371	-\$1.6237	(\$7,097)	3,376	-\$1.1194	(\$3,780)	5,938	-\$.2287	(\$1,358)
SNF >2.3									
April 2022				654	\$0.0000	\$0	1,238	\$0.0000	\$0
12 Months				5,949	\$0.0000	\$0	11,040	\$0.0000	\$0
SNF 2.0<>2.3									
April 2022				29,408	\$4.1753	\$122,789	53,133	\$4.1753	\$221,847
12 Months				349,312	\$3.1227	\$1,090,810	633,588	\$3.1170	\$1,974,924
Domestic Market									
April 2022	564,986	\$12.4478	\$7,032,827	404,767	\$10.3094	\$4,172,903	720,120	\$9.9000	\$648,108
12 Months	6,660,525	\$11.4273	\$76,112,092	4,764,174	\$9.8364	\$46,862,275	8,500,610	\$9.9000	\$7,650,549

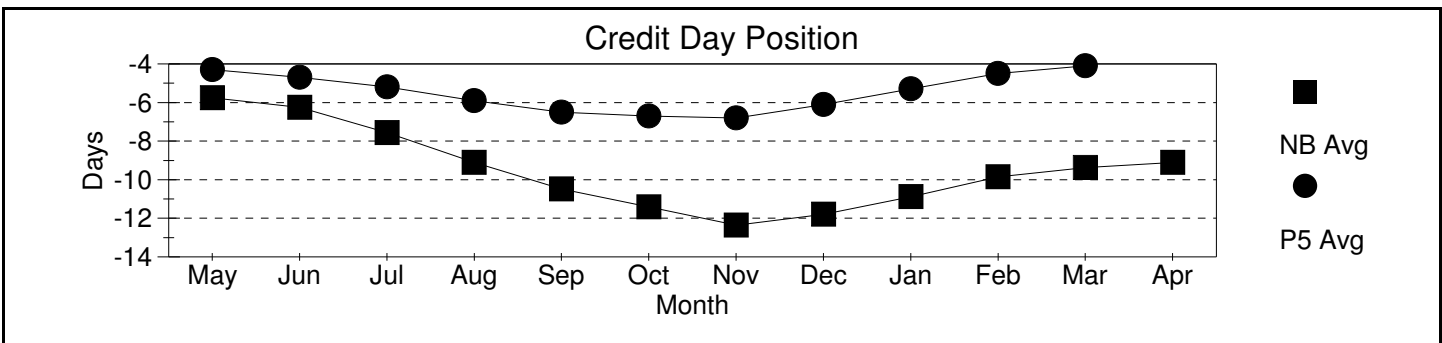
Production & Payment

Revenue	\$/HL	BF \$	PT \$	OS \$				Total Paid \$
April 2022	\$91.68	\$7,032,267	\$4,295,411	\$869,857				\$12,197,535
12 Months	\$85.07	\$76,104,995	\$47,949,305	\$9,624,115				\$133,678,415
Deductions	Transport	Promotion	Admin	Lab Fee	Research Levy	Total Ded Per HL		Total Deductions
	Per HL	Per Kg of Total Solids						
April 2022	\$3.12	\$1.139	\$0.0570	\$0.0100	\$0.0016	\$5.55		\$739,207
12 Months	\$2.93	\$1.139	\$0.0587	\$0.0092	\$0.0016	\$5.35		\$8,452,311
Quality	Somatic Cell Count	Standard Plate Count	Lab Past. Count					Rejected Loads
April 2022	156,828	6,696	141					0
12 Months	172,138	6,724	160					0
Production & Component Tests	Production Volume	Butter Fat	Protein	Lactose & O.S.	Total solids	SNF Ratio		
April 2022	13,310,455	4.2462	3.2679	5.8205	13.3347	2.1404		
12 Months	157,252,419	4.2383	3.2577	5.8194	13.3155	2.1417		

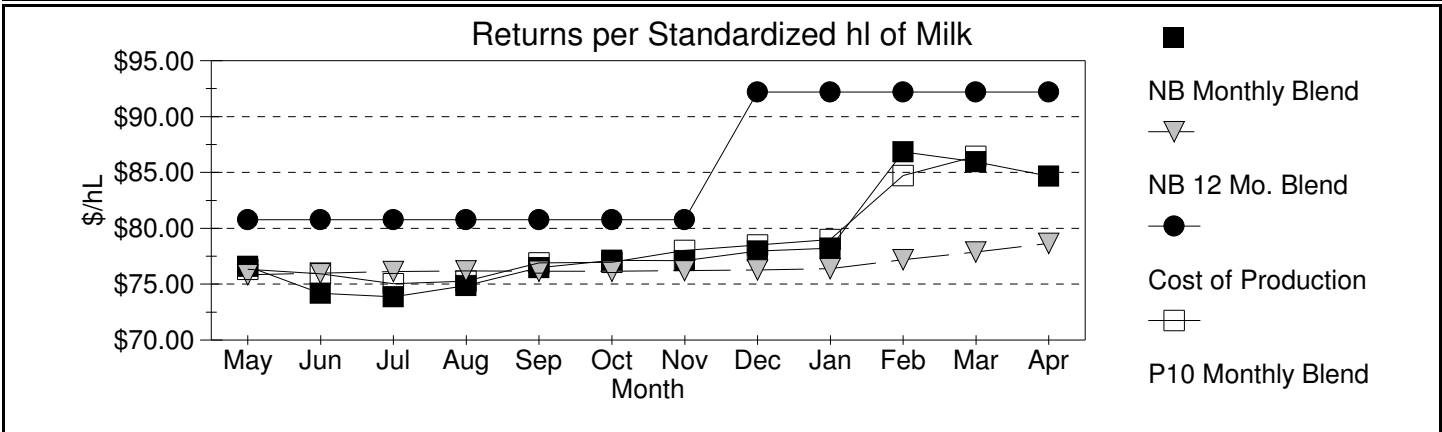
Milk Matters: Production and Payment Summary Report for April 2022



Credits



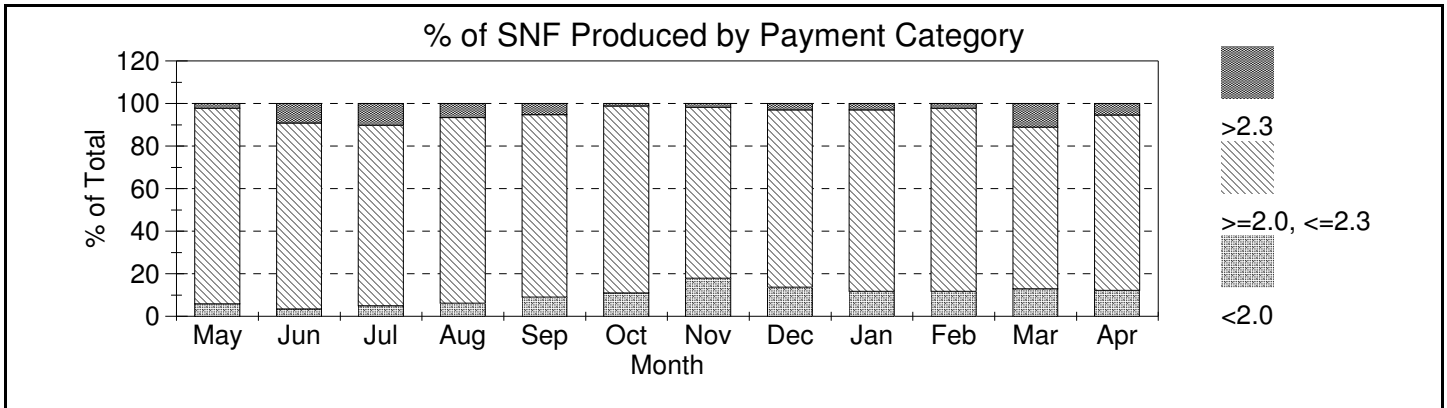
Month	May	Jun	Jul	Aug	Sep	Oct	Nov	Dec	Jan	Feb	Mar	Apr
Incentive Days Issued	0.00	1.00	1.00	1.00	2.00	1.00	2.00	0.00	0.02	0.06	1.06	1.06
Incentive Days Used	0.00	0.46	0.33	0.32	0.60	0.44	0.93	0.00	0.01	0.05	0.72	0.64
Days Over Quota	0.04	0.04	0.02	0.02	0.00	0.05	0.01	0.00	0.00	0.04	0.01	0.01
Days Lost	-0.04	-0.10	-0.20	-0.28	-0.29	-0.36	-0.39	-0.31	-0.14	-0.07	-0.07	-0.10
Days Exchanged	0.83	0.53	0.55	0.80	1.04	0.90	1.14	0.77	0.93	0.94	1.25	1.11
Credit Exch Clearing Price	\$10.00	\$4.55	\$3.01	\$5.01	\$4.75	\$3.99	\$4.00	\$3.75	\$5.43	\$7.78	\$7.78	\$5.00



Month	May	Jun	Jul	Aug	Sep	Oct	Nov	Dec	Jan	Feb	Mar	Apr
SNF 2.00-2.30 \$/kg	\$2.39	\$2.50	\$2.55	\$2.60	\$2.81	\$2.81	\$3.17	\$3.44	\$3.66	\$3.92	\$4.09	\$4.18

A standardized hl of milk contains 3.60 kg/hl BF, 3.23 kg/hl PT and 5.69 kg/hl LOS

SNF Policy



SNF/BF: Avg Ratios

Month	May	Jun	Jul	Aug	Sep	Oct	Nov	Dec	Jan	Feb	Mar	Apr
< 2	1.92	1.90	1.93	1.93	1.92	1.91	1.92	1.91	1.91	1.92	1.92	1.93
2 < > 2.3	2.16	2.18	2.18	2.17	2.17	2.14	2.14	2.14	2.14	2.15	2.15	2.16
> 2.3	2.36	2.35	2.38	2.36	2.36	2.34	2.31	2.33	2.33	2.31	2.33	2.36
Provincial	2.15	2.19	2.19	2.17	2.15	2.12	2.10	2.12	2.12	2.12	2.14	2.14